



**NORTH TEXAS CHAPTER**

# The Concrete Connection

A publication of the North Texas Chapter ICRI

JANUARY / FEBRUARY 2016

## INSIDE THIS ISSUE:

President's Message 2

Future Programs & Events 2

2016 NTX Schedule 3

Future Programs 4

Industry News 5

November Meeting Recap 6

ARTICLE – CPI Field School at Alcatraz Island 7

Board Members and Meeting Details 8

## FEBRUARY PROGRAM :

# Use of Lateral Restraint Anchors for Stabilization of Multi-wythe Masonry Walls

## Speaker Bio:

Alan Pettingale is the president and founder of Specialized Masonry Restoration. He has thirty years of professional experience in masonry repair systems, site-assessment surveys, forensic testing and implementing a wide range of remedial strategies for masonry stabilization. Alan's expertise is in the application of masonry restoration for schools, churches, colleges, historical, residential and commercial buildings in the US and England.



## Presentation Summary:

Anchor systems in masonry walls have been used for centuries, with the earliest dating back to the Romans and Greeks who used wrought iron to supplement conventional masonry. Other cultures and countries have used variations of metal anchors and straps in the construction of masonry, as well as for retrofit or repair applications to supplement and strengthen masonry systems after natural disasters such as earthquakes. There are numerous modern applications where lateral restraint anchors can be utilized to remediate masonry walls that are in service to accommodate additional applied forces or to strengthen masonry weakened by deterioration or excessive load. Often, lateral restraint anchors can utilize the existing interior framing of a building to re-establish a point of support at an intermediate height of the wall. This is accomplished through a combination of fasteners or anchors that secure straps, rods, or other tension elements to the masonry wall to resist lateral displacement. Many of these applications merge the basic premises of historic methods with techniques and modern materials of the twentieth century to provide a cost effective, aesthetically appealing, and preservation oriented method for remediating masonry. This merger of old and new techniques allows us to stabilize historic walls for modern service conditions allowing them to continue serving their intended function.

## PRESIDENT'S MESSAGE



Patrick Jorski

Well, it's a New Year and time to get back to work. I hope everyone had a Happy Holiday and a Happy New Year.

What a great year for our chapter last year, and I am looking forward to another great year for our ICRI North Texas Chapter. I want to thank everyone for electing me as your chapter President for 2016. I want to thank all of our members for all the hard work over the years to make us one of the strongest chapters in the industry. I am excited about all of our special events we will be hosting this year to make our chapter even stronger.

This year we have a new venue for our chapter lunch meetings, Mattito's Tex-Mex. Mattito's is an award winning Tex-Mex restaurant and has delicious meals. I highly recommend you try "The Bob" queso dip. It is one of a kind. I hope everyone will attend.

Everyone please promote our chapter to all of your clients and customers. The only way to make us stronger is to grow.

I hope to see many of you at the ICRI kick-off party at WOC.

Be sure to also mark your calendars for our future programs and events!

## SPECIAL EVENTS IN 2016

- April 21—Sporting Clays at Dallas Gun Club
- June 9—Top Golf Tournament at Top Golf in The Colony
- July 15 - Bowling Social Event
- September 23—North Texas 15th Annual Golf Classic at Waterchase Golf Club

# 2016 NORTH TEXAS ICRI SCHEDULE

## 2016 NORTH TEXAS ICRI IMPORTANT DATES

### JANUARY

S	M	T	W	T	F	S
					1	2
3	4	5	6	7	8	9
10	11	12	13	14	15	16
17	18	19	20	21	22	23
24	25	26	27	28	29	30
31						

### MARCH

S	M	T	W	T	F	S
			1	2	3	4
6	7	8	9	10	11	12
13	14	15	16	17	18	19
20	21	22	23	24	25	26
27	28	29	30	31		

### MAY

S	M	T	W	T	F	S
1	2	3	4	5	6	7
8	9	10	11	12	13	14
15	16	17	18	19	20	21
22	23	24	25	26	27	28
29	30	31				

### JULY

S	M	T	W	T	F	S
					1	2
3	4	5	6	7	8	9
10	11	12	13	14	15	16
17	18	19	20	21	22	23
24	25	26	27	28	29	30
31						

### SEPTEMBER

S	M	T	W	T	F	S
					1	2
4	5	6	7	8	9	10
11	12	13	14	15	16	17
18	19	20	21	22	23	24
25	26	27	28	29	30	

### NOVEMBER

S	M	T	W	T	F	S
			1	2	3	4
6	7	8	9	10	11	12
13	14	15	16	17	18	19
20	21	22	23	24	25	26
27	28	29	30			

### FEBRUARY

S	M	T	W	T	F	S
					1	2
7	8	9	10	11	12	13
14	15	16	17	18	19	20
21	22	23	24	25	26	27
28	29					

### APRIL

S	M	T	W	T	F	S
						1
3	4	5	6	7	8	9
10	11	12	13	14	15	16
17	18	19	20	21	22	23
24	25	26	27	28	29	30

### JUNE

S	M	T	W	T	F	S
						1
5	6	7	8	9	10	11
12	13	14	15	16	17	18
19	20	21	22	23	24	25
26	27	28	29	30		

### AUGUST

S	M	T	W	T	F	S
						1
7	8	9	10	11	12	13
14	15	16	17	18	19	20
21	22	23	24	25	26	27
28	29	30	31			

### OCTOBER

S	M	T	W	T	F	S
						1
2	3	4	5	6	7	8
9	10	11	12	13	14	15
16	17	18	19	20	21	22
23	24	25	26	27	28	29
30	31					

### DECEMBER

S	M	T	W	T	F	S
					1	2
4	5	6	7	8	9	10
11	12	13	14	15	16	17
18	19	20	21	22	23	24
25	26	27	28	29	30	31

### JANUARY 8

BOARD MEETING

### FEBRUARY 1-5

WORLD OF CONCRETE

### FEBRUARY 11

MEMBERSHIP MEETING

### FEBRUARY 25-26

ICRI CHAPTER ROUNDTABLE  
TAMPA, FL

### MARCH 11

BOARD MEETING

### MARCH 16-18

ICRI SPRING CONVENTION  
SAN JUAN, PUERTO RICO

### APRIL 13

JOINT MEETING W/ UTA ASCE

### APRIL 14

MEMBERSHIP MEETING

### APRIL 21

CLAY SHOOT

### MAY 13

BOARD MEETING

### JUNE 9-10

TEXAS STATE CONVENTION  
FORT WORTH, TX

### JUNE 9

MEMBERSHIP MEETING

### JULY 15

BOWLING SOCIAL

### AUGUST 12

BOARD MEETING

### SEPTEMBER 8

MEMBERSHIP MEETING

### SEPTEMBER 23

GOLF TOURNAMENT

### OCTOBER 14

BOARD MEETING

### NOVEMBER 9-11

ICRI FALL CONVENTION  
CLEVELAND, OH

### NOVEMBER 17

MEMBERSHIP MEETING

### DECEMBER 9

BOARD MEETING

### NEWSLETTER DEADLINES

3RD FRIDAY EACH MONTH

LEGEND	
	BOARD MEETINGS
	SPECIAL EVENTS
	NATIONAL ICRI DATES
	MEMBERSHIP MEETINGS
	NEWSLETTER DEADLINES

# FUTURE PROGRAMS & EVENTS

- The 2016 ICRI Kick-Off Party will be held on Monday evening, February 1st at New York New York's Nine-Fine Irishmen venue.
- World Of Concrete



- **First North Texas ICRI Membership Meeting of 2016—February 11th**
- **ICRI Spring National Convention - San Juan, Puerto Rico—March 16-18**

**Mark Ostrander**  
President

Cell 972-765-4370  
 Office 972-681-6222, ext. 303  
 Fax 972-681-1545  
 Mark@SunbeltLLC.com  
 www.SunbeltBuildingServices.com  
 7318 Ferguson Road | Dallas, Texas 75228

**Machine Technologies, LLC**  
 620 CR 4841  
 Haslet, TX 76052

**D. Scott Olson**  
President

phone: 817.636.5637  
 cell: 817.312.4837  
 fax: 817.636.5675

scott@machine-technologies.com

**DANIELLE CZYZEWSKI**  
P.E., REWC

Project Manager  
 dczyzewski@pieglobal.com  
 Cell 972.890.7668

323 Industrial Blvd., Suite C  
 McKinney, TX 75069  
 1.855.380.8812 (TX toll-free)  
 1.866.552.5246 (nationwide)  
 www.pieglobal.com

**The George D. Alan Co.**

**Andy Bautz** vice president

2205 Century Circle  
 Irving, TX 75062

214.496.9999 phone  
 817.825.1771 cell  
 214.496.9998 fax  
 abautz@waterproof.pro email

www.waterproof.pro

**The Chemical Company**

**Patrick Jorski**  
Parking and Restoration Specialist  
 North and West Texas

BASF Corporation  
 Construction Chemicals  
 899 Valley Park Drive  
 Shakopee, MN 55379

Telephone: 972-358-0034  
 Mobile: 972-358-0034  
 patrick.jorski@basf.com  
 www.master-builders-solutions.basf.us

**Casey Jones**  
Consultant

T 214.234.4977  
 C 214.577.7799  
 E cjones@cdc-usa.com  
 W cdc-usa.com

8070 Park Ln., Suite 400 | Dallas, TX 75231

**Ron D. Morris**  
President

8900 Forney Road  
 Dallas, Texas 75227-4505  
 214-381-8100  
 Cell 214-679-4775  
 Fax 214-381-8158  
 ron.d.morris@att.net

**LYONS MANUFACTURING, INC.**  
 www.lyonsmanufacturing.com

**William (Bill) Light**  
Senior Project Sales Representative

**Sika Corporation**  
 201 Polito Avenue  
 Lyndhurst, NJ 07071  
 Personal Office: 6621 Hillwood Lane  
 Dallas, TX 75248

Tel: 972-567-9430  
 Fax: 972-392-7444  
 Tech Service: 800-933-7452(SIKA)  
 light.bill@sika-corp.com  
 www.sikaconstruction.com

# INDUSTRY NEWS

## WJE DALLAS HIRES JOHN B. TURNER

John B. Turner, PE has joined the Dallas office of Wiss, Janney, Elstner Association, Inc.

John comes to WJE with eleven years of structural engineering experience. His areas of focus at WJE are structural diagnostics, construction defects, failure investigation, and repair. He brings recent experience from the concrete reinforcement industry, where he was the Greater Southwestern Regional manager with the Concrete Reinforcing Steel Institute. There he worked with researchers, designers, and codes and standards developers. Mr. Turner is a member of ACI Committee 301 (Specifications) and Committee 117 (Tolerances), and is the outgoing President of the Dallas Chapter of the Structural Engineers Association of Texas.

He received his Bachelor of Science in Safety Engineering from Texas A&M University and his Master of Science in Civil Engineering from Texas Tech University. He is a licensed Professional Engineer in Texas and holds the Certified Safety Professional designation.

## PETE HAVERON NAMED CO-CHAIR FOR COMMITTEE 310

Pete Haveron with Texas Concrete Restoration has been appointed as the Co-Chair of the National ICRI Committee 310 for Surface Preparation.

## ICRI LAUNCHES NEW WEBSITE

As of January 12, 2016, the National ICRI website has taken on a new look. You can visit this new page at [www.icri.org](http://www.icri.org).

*Do you have any industry news? Please contact Matt Eller at [meller@xlbrands.com](mailto:meller@xlbrands.com) to publish in the next NTX ICRI newsletter!*



### Texas Concrete Restoration, Inc. Concrete Repair Specialists

Concrete Repairs • Concrete Pour Back  
Crack Repairs • Parking Lot  
Concrete Removal and Demolition  
Core Drilling • Concrete Sawing  
Parking Garage • Industrial Floor Repairs  
Waterproofing • Recaulking  
Deco Coating • Epoxy Injection • Stains  
Pressure Washing • Concrete and Brick  
Cleaning • Floor Sealers and More

**Pete Haveron**  
President

(972) 291-8254  
Fax (972) 291-8294  
Cell (214) 317-2226  
[texconrest@aol.com](mailto:texconrest@aol.com)  
[peteh@texconrest.com](http://peteh@texconrest.com)

Civil • Structural • Survey • Forensics • IPD  
Consulting Engineers



**Kristina F. Geisler, PE**  
[kgeisler@rlginc.com](mailto:kgeisler@rlginc.com)

**Mark A. Bartlett, PE**  
[mbartlett@rlginc.com](mailto:mbartlett@rlginc.com)

5445 La Sierra, Suite 300, LB 17  
Dallas, Texas 75231

(214) 739-8100  
[www.rlginc.com](http://www.rlginc.com)



We create chemistry

Eddie De Haro

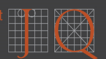
Key Account Manager  
Construction Systems  
North and West Texas

BASF Corporation  
889 Valley Park Drive  
Shakopee, MN 55379  
Mobile 651-717-4303  
[eddie.diharo@basf.com](mailto:eddie.diharo@basf.com)  
[www.master-builders-solutions.basf.us](http://www.master-builders-solutions.basf.us)



**MARK D. LEMAY, AIA, LEED® AP**  
ASSOCIATE  
SENIOR PROJECT MANAGER

shaping the built environment



**MLEMAY@JQENG.COM**  
817.546.7200 OFFICE  
214.623.5895 DIRECT  
214.549.7966 CELL

1301 WEST 7TH STREET  
SUITE 141  
FORT WORTH, TEXAS 76102  
**JQENG.COM**



EUCLID CHEMICAL

An RPM Company

Clay Broyles  
Sales Representative  
N. TX & Oklahoma  
The Euclid Chemical Company  
1835 Upper Montague Road  
Bowie, TX 76230

[cbroyles@euclidchemical.com](mailto:cbroyles@euclidchemical.com)  
Cell: 318.471.1131  
Fax: 855.382.5436

[www.euclidchemical.com](http://www.euclidchemical.com)

ISO 9001 Certified UL File #A3129



**BOB SCHEELAR**  
Department Manager  
Cell: 214-679-9719

2601 Industrial  
Garland, TX 75041  
972-289-7000 x4411  
Fax: 972-289-7311

[bobs@westernspecialtycontractors.com](mailto:bobs@westernspecialtycontractors.com)

[www.westernspecialtycontractors.com](http://www.westernspecialtycontractors.com)

# NOVEMBER 2015 PROGRAM RECAP

For our final meeting of the 2015 year, we conducted a presentation with a panel full of our Board members.

DID YOU KNOW.... that our NTX Chapter has grown to 93 members??? Because of the significant increase in our membership over the past few years, our final meeting of the year was set to accomplish the following:

- Update you on ICRI’s progress in implementing the new Strategic Plan, and how it affects our Chapter
- Socialize, network, and get to know our fellow members, new and old, and the companies that make the North Texas Chapter an “Outstanding Chapter” year after year
- Had an open forum to discuss ideas for our Chapter going forward regarding desired programs and activities
- Raised money for area food banks

**We charged \$10 per person to attend the November meeting and ALL proceeds and donations collected were donated to the North Texas Food Bank. Donations totaled \$350!**

The meeting was held at Dave & Busters, located at the southeast corner of Central Expressway (US 75) and Walnut Hill Lane in Dallas. It was a great opportunity to introduce new and potential members to our organization.

For anyone that is still interested in obtaining more information or even becoming more involved in the chapter, please contact a local Board member. All Board members contact information can be found on the back of this newsletter.

We look forward to a very exciting and productive 2016!




**CONSTRUCTION & ENGINEERING**

**COMMERCIAL & INDUSTRIAL  
CONCRETE CONSTRUCTION & REPAIR**

**DON G. WEEMPE, P.E.**  
dweempe@masterconstruction.com  
www.masterconstruction.com

P.O. BOX 226984      OFC. 214-748-5611  
DALLAS, TEXAS 75222      CELL 214-728-4450



**TPCCI**

*Manufacturer's Representative  
Spetec Chemical Grouts  
Thermal-Chem Flooring  
Milliken FRP Composites*

**JOHN M. ZIEBELL**

26911 Bridleway Circle      (832) 746-3507  
Magnolia, TX 77355      johnziebell@att.net

**REGINALD B. HILL, CSI**

**W. R. MEADOWS OF TEXAS**  
www.wrmeadows.com

2555 N.E. 33<sup>RD</sup> STREET  
P.O. BOX 7752  
FORT WORTH, TX 76111  
817-834-1969  
800-342-5976  
FAX: 817-834-0134  
CELL: 817-996-6179  
E-Mail: rhill@wrmeadows.com




**ALL-TEX Supply, Inc.**

**JESSE POINTS**  
(214) 357-6646

CONSTRUCTION & WATERPROOFING SUPPLIES

10802 N. Stemmons Frwy.      Austin (512) 837-0977  
Dallas, Texas 75220      San Antonio (210) 967-4754  
Cell (214) 578-9774      Oklahoma (405) 684-9500  
www.all-texsupply.com      Email: jesse@all-texsupply.com

**Christopher A. Albright**  
Concrete Restoration Specialist - TX & OK

calbright@mapei.com  
Cell: (214) 797-0946



**MAPEI Corporation**  
1604 Jensen Ct, Dallas, TX 75204  
Website: www.mapei.com

**Your Card Here**

Please contact Matt Eller at  
meller@xlbrands.com for advertisement options



## CONCRETE PRESERVATION INSTITUTE PROVIDES FIELD SCHOOL AT ALCATRAZ ISLAND

The Concrete Preservation Institute offers an experience of a lifetime for current military personnel and post-9/11 veterans from around the country interested in any type of future career. Participants learn & work Monday-Friday completing significant concrete repair projects on the National Historic Landmark Alcatraz Island. They offer a safe, structured, service-oriented, and welcoming environment for military personnel to train for jobs or find a direction for college while on active duty or as they transition to civilian life after military separation.

They offer three, 12-week, full-time sessions each year at Alcatraz through our partnership with the US National Park Service (NPS). CPI is planning additional Field School locations for the future (*Please see website for session dates and location updates*).

Participants will:

- **Earn 480 National Park Service volunteer hours** helpful in possible future NPS job applications
- Complete OSHA safety course and receive **OSHA Safety Certificate**
- Gain the skills and knowledge included in the International Concrete Repair Institute's "**Concrete Surface Repair Certification**" program that will be available through ICRI after January 2016
- Gain **teamwork skills and a tremendous sense of accomplishment** completing significant repair projects on buildings important to our military and cultural history
- Become knowledgeable about **preservation and long-term stewardship** of natural resources and the built environment
- Gain **leadership experience** through project & logistics management, safety management, and public relations with Park visitors, the press, NPS, and industry executives
- Develop **hands-on skills** in basic concrete construction/repair design, evaluation, and testing; project scheduling/estimating; tool/equipment operation and maintenance; wood carpentry; and concrete materials/mixing/placement/finishing

### Alumni Outlook

Through the unique and demanding CPI experience, participants typically find their passion and direction for future careers in concrete, construction, engineering, and other construction-related fields or business, sales, technology, non-profit work, cultural and natural resource stewardship, NPS and other government service, and other related areas. CPI uses their extensive nationwide industry & academic connections to help alumni move into skilled trade jobs, management-path careers, additional paid internships, and college programs. They are based in California but assist alumni in networking for careers or college in any state or even internationally. For alumni seeking employment or college application assistance, **CPI has a 100% placement record!!**

*Please visit [www.cpi-foundation.org](http://www.cpi-foundation.org) for more information and to view the overview video*

**MOBILE Enterprises**  
Structural Concrete Repair  
Coatings & Linings  
"Established in 1973"

FT. WORTH	(817) 921-1444
DALLAS METRO	(817) 429-5889
HOUSTON	(713) 973-1033
FAX METRO	(817) 429-7300

832 SOUTHWAY CIRCLE  
FORT WORTH, TEXAS 76115-4008

[solutions@mobileenterprises.com](mailto:solutions@mobileenterprises.com)

**WJE** | ENGINEERS  
ARCHITECTS  
MATERIALS SCIENTISTS

Douglas L. Smith PE  
Principal and Unit Manager

Wis, Janney, Elstner Associates, Inc.  
6363 North State Highway 161, Suite 550  
Irving, Texas 75038  
[www.wje.com](http://www.wje.com)

tel 972.550.7777  
fax 972.550.7770  
mobile 817.832.4137  
[dsmith@wje.com](mailto:dsmith@wje.com)



# NORTH TEXAS CHAPTER 2016 BOARD MEMBERS

<b>President</b>	<b>Patrick Jorski</b>	<b>Patrick.jorski@basf.com</b>	<b>972-358-0034</b>
<b>President-Elect</b>	<b>Julie Bolding</b>	<b>jbolding@jqeng.com</b>	<b>817-546-7200</b>
<b>Vice President</b>	<b>R.W. Smith</b>	<b>rwsmith@masterconstruction.com</b>	<b>214-748-5611</b>
<b>Treasurer</b>	<b>Pete Haveron</b>	<b>peteh@texconrest.com</b>	<b>972-291-8254</b>
<b>Secretary</b>	<b>Andy Bautz</b>	<b>abautz@waterproof.pro</b>	<b>214-496-9999</b>
<b>1 year Director</b>	<b>Kenny Petty</b>	<b>kpetty@strongtie.com</b>	<b>214-632-6494</b>
<b>2 year Director</b>	<b>Stephen Grelle</b>	<b>sgrelle@wje.com</b>	<b>972-550-7777</b>
<b>3 year Director</b>	<b>Clay Broyles</b>	<b>cbroyles@euclidchemical.com</b>	<b>318-471-1131</b>
<b>Immediate Past President</b>	<b>Danielle Czyzewski</b>	<b>dczyzewski@pieglobal.com</b>	<b>214-856-8818</b>

**Matt Eller**  
FIELD MARKETING MANAGER

XL Brands, LLC  
198 Nexus Drive | Dalton, GA 30721  
cell | 972-489-5885 fax | 706-272-5816  
email | meller@xlbrands.com  
Technical Rapid Response | 706-508-5907 M-F 8-5 EST

www.xlbrands.com



**XL Brands**




**INTEGRAL BONDING SYSTEMS**

**Larz A. Smith**  
President

Dallas: 214-634-2990  
Fort Worth: 817-332-2220  
Toll Free: 800-842-7292  
Fax: 214-634-0953  
Cell: 214-502-1142

2303 Shorecrest Dr.  
Dallas, Texas 75235  
ismith@con-pen.com  
www.concretepenetrating.com



**EUCLID CHEMICAL**

**James Robbs**  
Manager Construction Products  
Texas, Oklahoma, & Louisiana

The Euclid Chemical Company  
3308 Brookhaven Club Dr.  
Dallas, TX 75234

jrobbs@euclidchemical.com  
Cell: 214-325-4936  
Fax: 972-243-6401  
www.euclidchemical.com

An **ARM** Company      ISO 9001 Certified UL File #A3129



**CONCRETE SERVICES**  
Concrete Restoration

**Cris Gillmore**

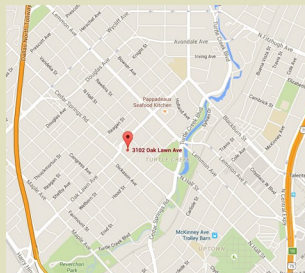
P.O. Box 472094 (918) 663-1222  
Tulsa, OK 74147 FAX (918) 663+1224  
cris@concreteservicescorp.com www.concreteservicescorp.com  
(918) 798-4875

## MEETING LOCATION AND RESERVATIONS

2016 meetings will be held at:

**Mattito's Tex-Mex** - Dallas, TX  
3102 Oak Lawn Ave  
Dallas, TX 75219

Registration & Networking at 11:00  
Lunch served at 11:45  
Program begins at 12:00



RSVP at

<http://whoozin.com/49H-VRW-4FKT>

Or Email [meller@xlbrands.com](mailto:meller@xlbrands.com)

Phone: 972-489-5885

The North Texas Chapter is always looking for ways to expand or refine the newsletter. If you have suggestions on what we should include in the newsletter, new ideas, articles, or things we need to cut-out please send those comments to Matt Eller (meller@xlbrands.com).

Did your business card not make the newsletter? Don't worry. We can include you in future issues of the newsletter. Please contact Matt Eller (meller@xlbrands.com) for information. Don't delay as our newsletter ads operate on a calendar year.

**Cost (cash/check/credit card):**

**\$25.00 for Members**

**\$30.00 for Non-members**